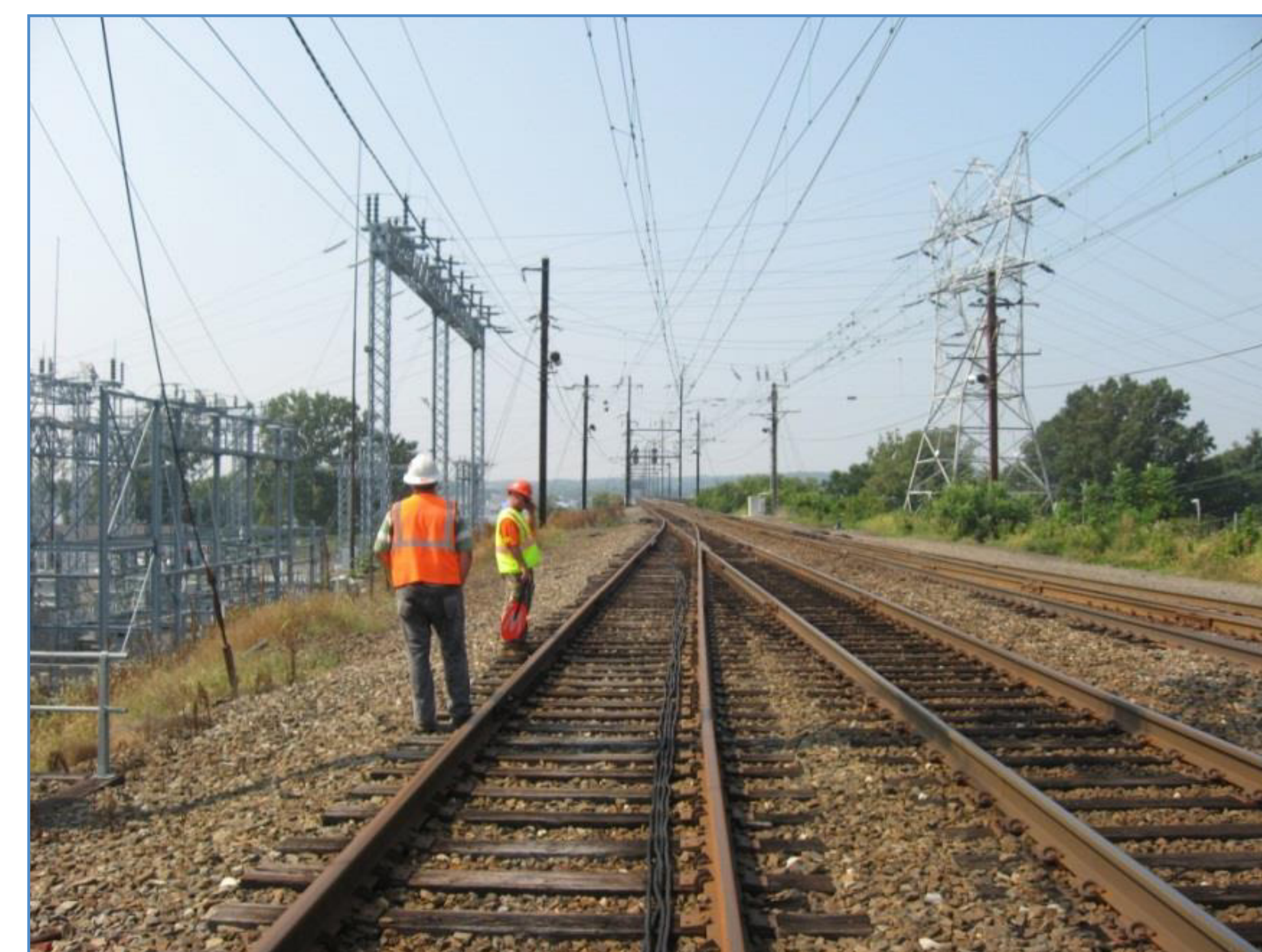


# Project Purpose and Need

**The primary purpose of the Susquehanna River Rail Bridge Project is to provide continued rail connectivity along the Northeast Corridor (NEC).**

The project goals include:

- Improve rail service reliability and safety
- Improve operational flexibility and accommodate reduced trip times
- Optimize existing and planned infrastructure and accommodate future freight, commuter, intercity, and high-speed rail operations
- Maintain adequate navigation and improve safety along the Susquehanna River



*The Northeast Corridor merges from four tracks to two tracks (heading south from Perryville to Havre de Grace).*